

Introduction to IEEE

Baltimore Section Officer Training

Jeff Friedhoffer

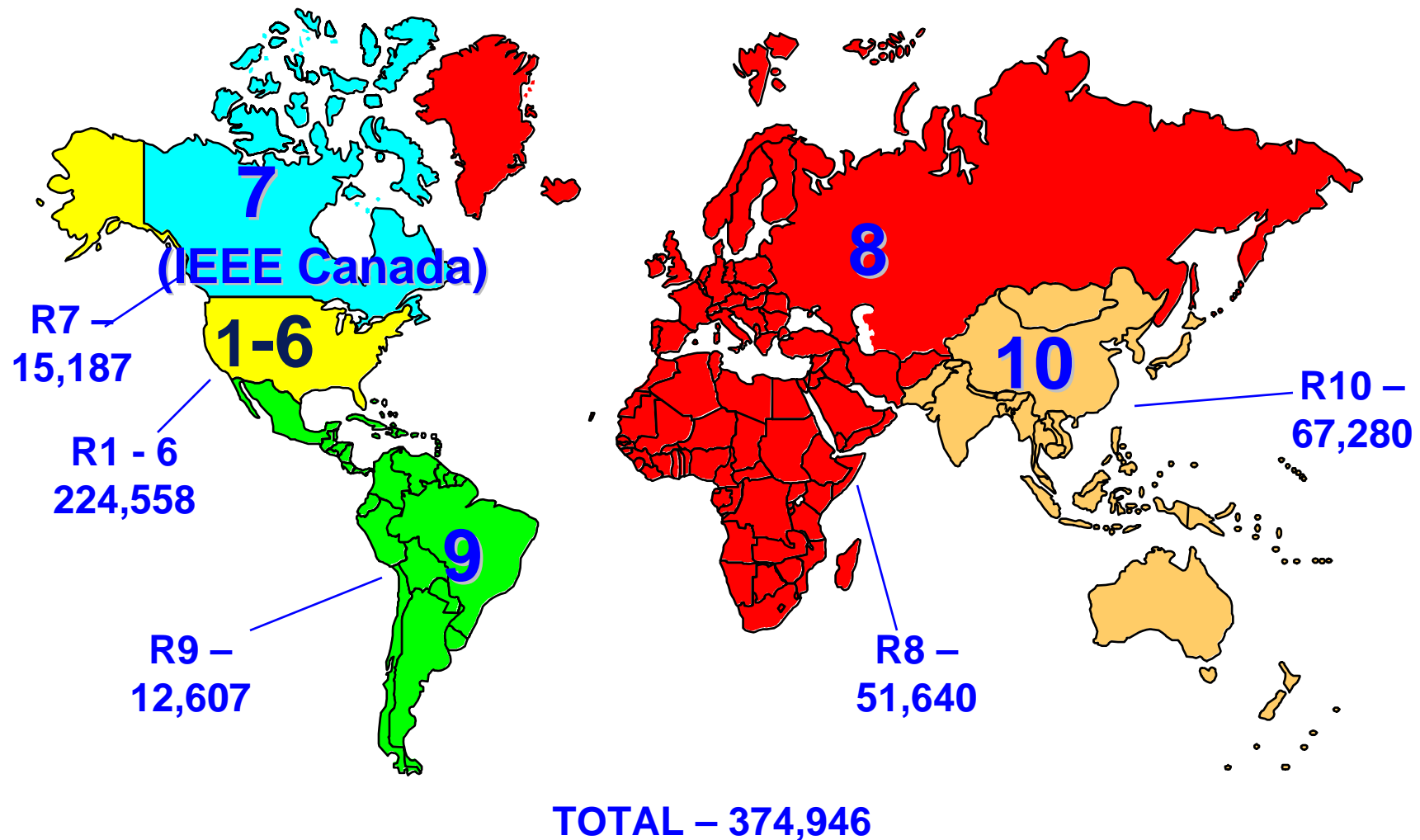
March 19, 2005 HEM

IEEE, January 2005

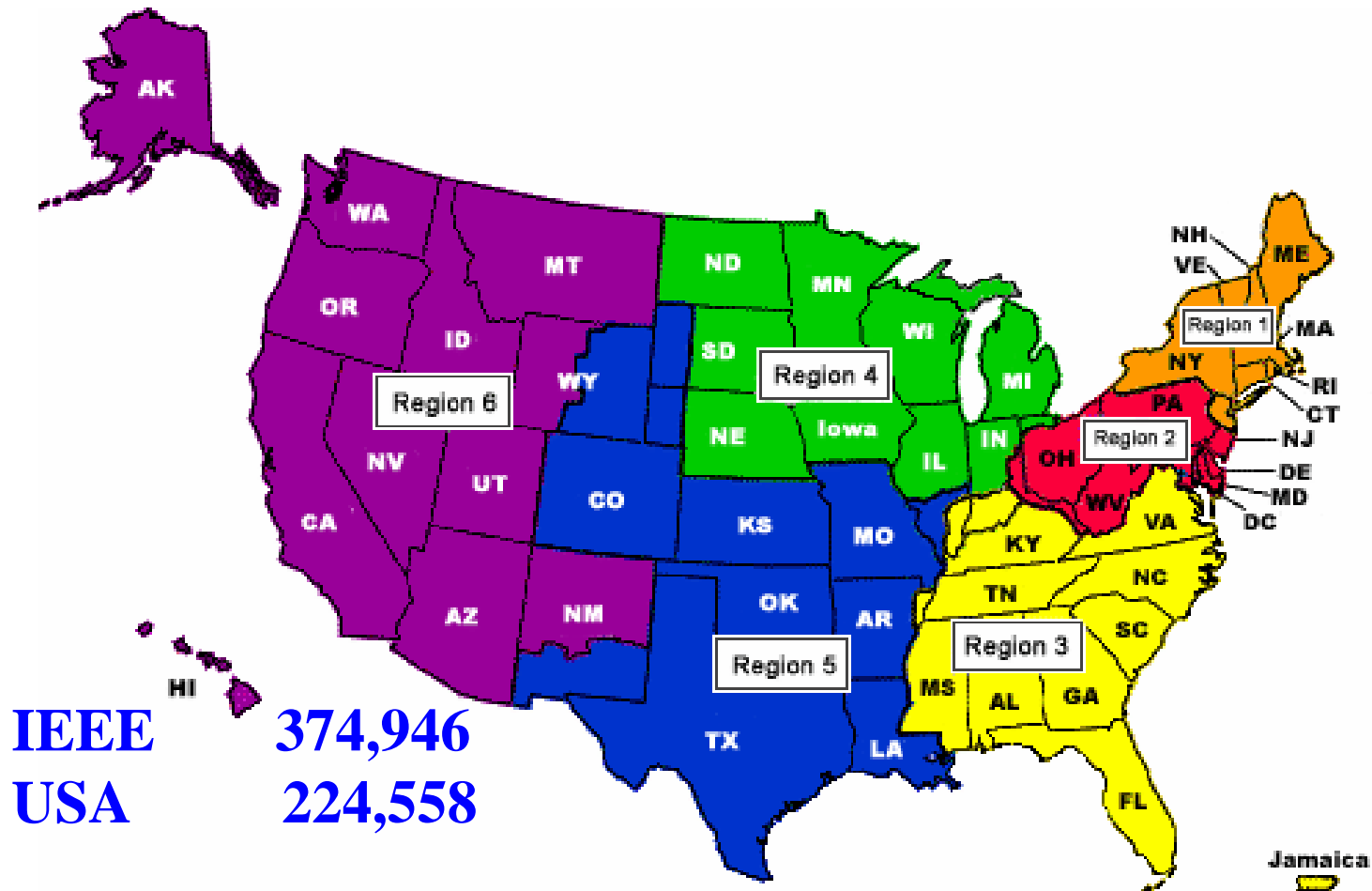
- Over 365,000 members in over 150 countries
 - almost 40 percent of whom are from outside the United States.
- Over 68,000 student members.
- Over 27,000 society affiliates.
- 307 sections
 - 1,446 Technical Chapters.
- More than 1,300 student branches in 80 countries.
 - Over 300 student branch chapters.
 - More than 147 Affinity Groups
- 39 societies and 3 technical councils

IEEE Membership By Regions

January 2005



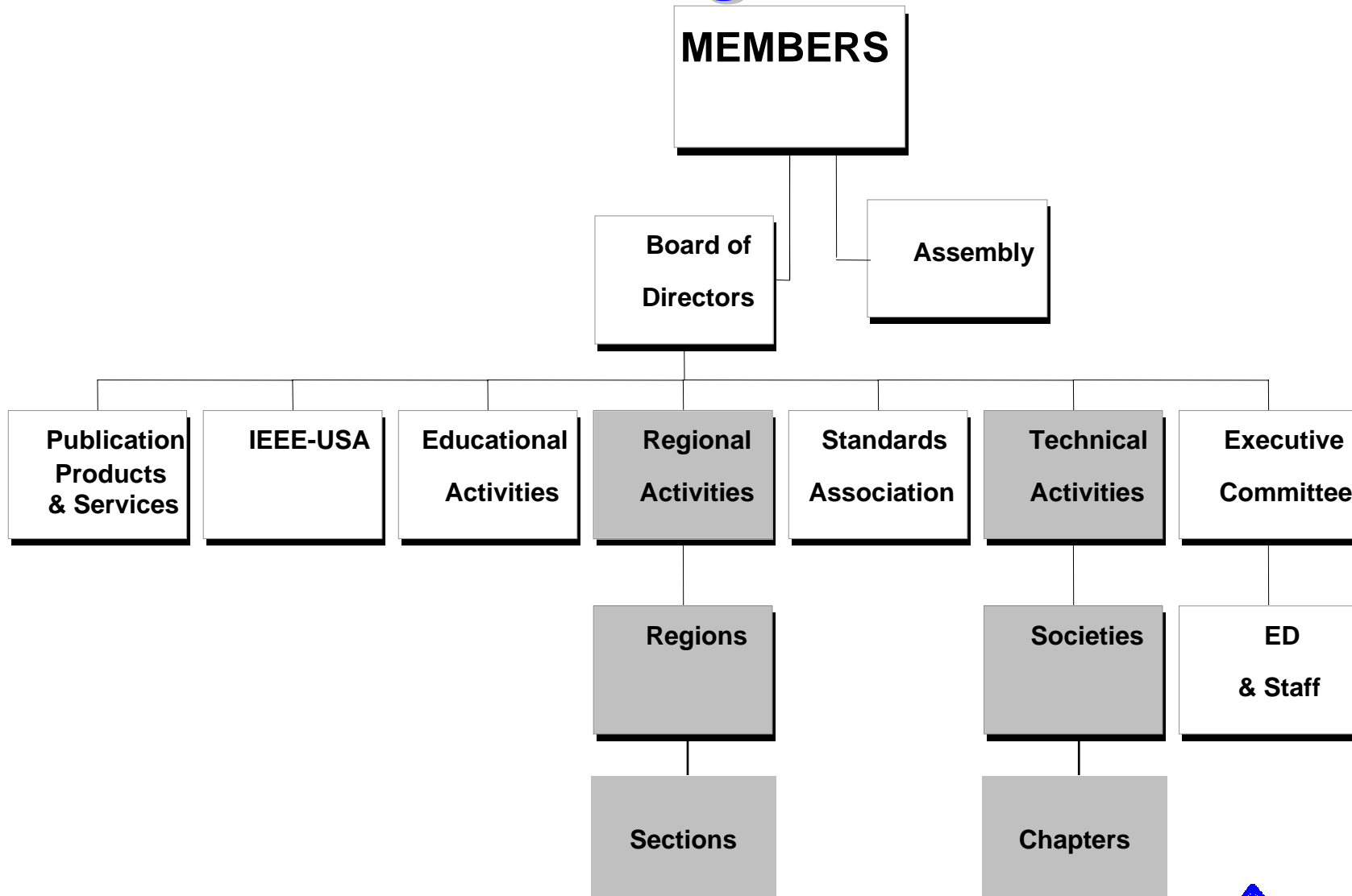
A Region Perspective



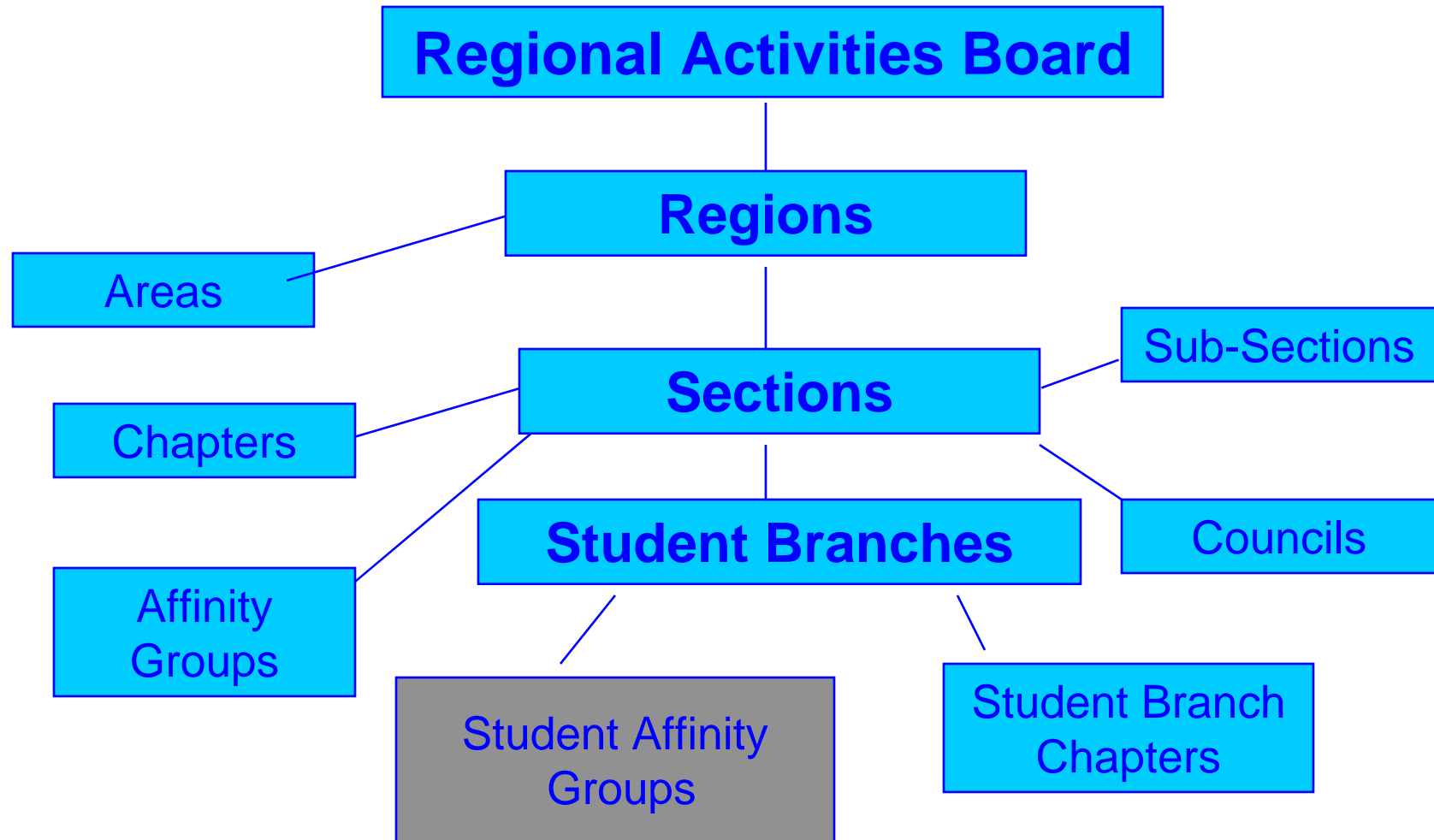
Region 2 34,509



IEEE Organization



Regional Structure



Section Region 2

South

Baltimore
No. Virginia
Washington

Central

Central Pennsylvania
Erie
Johnstown
Pittsburgh
Susquehanna
West Virginia

West

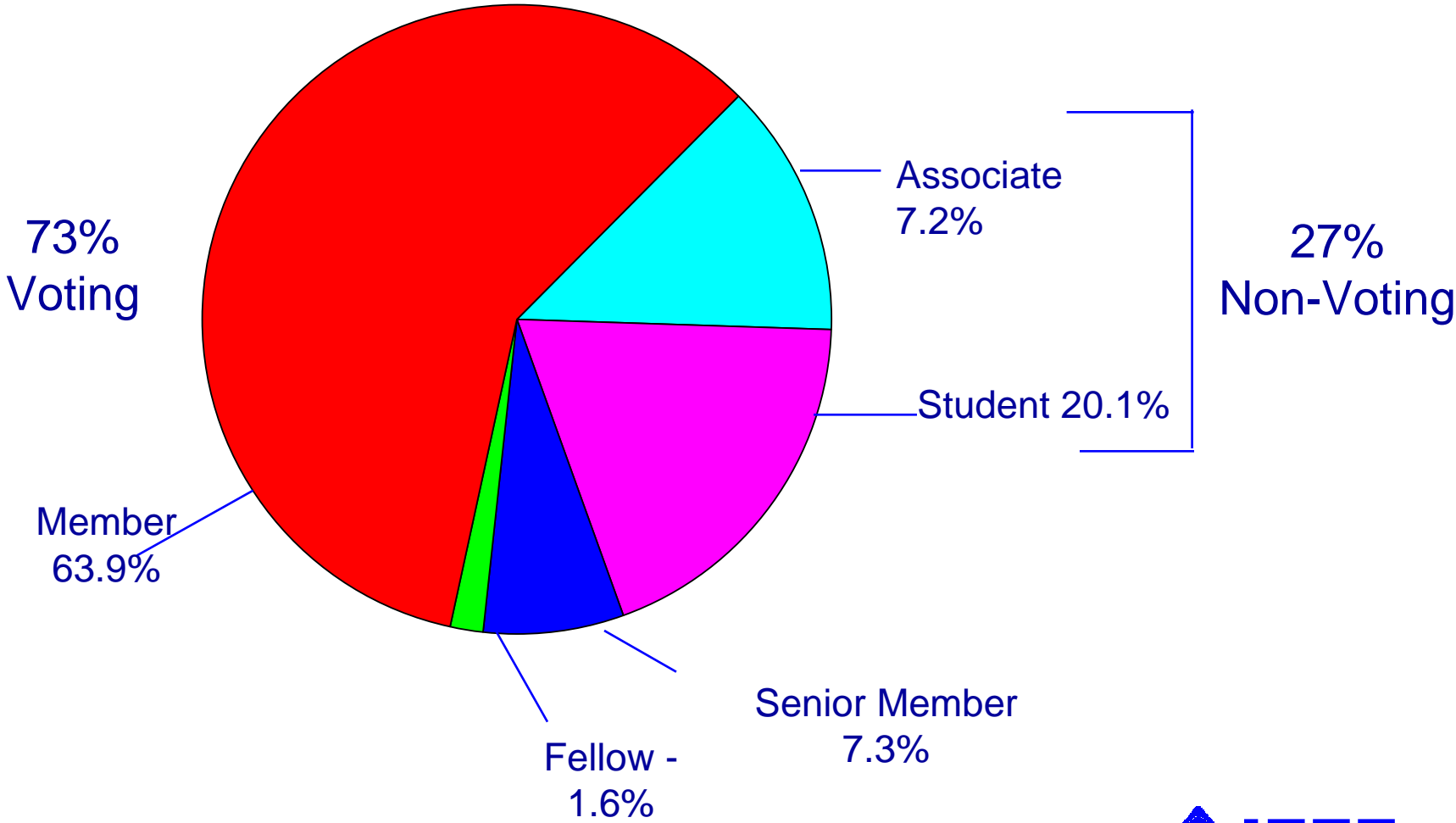
Akron
Cincinnati
Cleveland
Columbus
Dayton
Lima
Youngstown

East

Delaware Bay
Lehigh Valley
Philadelphia
Southern NJ

IEEE Membership by Grade

31 December 2004



IEEE Vision

To Advance Global Prosperity By

- Fostering Technological Innovation
- Promoting IEEE Communities, World-Wide
- Enabling Members' Careers

IEEE Regional Activities Board Mission

- **Shall serve the needs of the members of the IEEE by maintaining, enhancing & supporting the geographical organizational units of the IEEE.**
- Shall be responsible for IEEE membership & membership development, including recruitment, administration of admissions, retention, elevation & service, as well as related operational and budget issues.

IEEE Regional Activities Board Mission (continued)

- Recognizes the intimate relationship between Sections & Societies & their Chapters & will work with other IEEE organizational units to foster improved interactions