

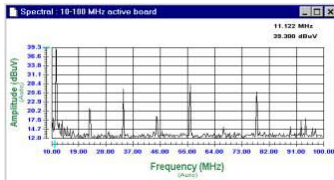
## EMC Chapter Meeting

You are invited to attend the next IEEE Milwaukee Section - EMC Chapter Meeting.  
This meeting is open to all IEEE Members and Non-members.

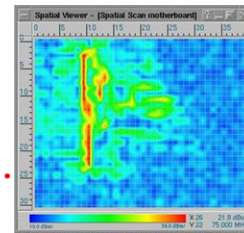
Our scheduled speaker is **Mr. Doug McKinnon** of **EMSCAN, LLC**

EMSCAN is the world's leader in electromagnetic scanning of PCBs  
to assist design engineers in achieving  
EMC compatibility and optimal functionality.

Join us to learn more about the Benefits of ...

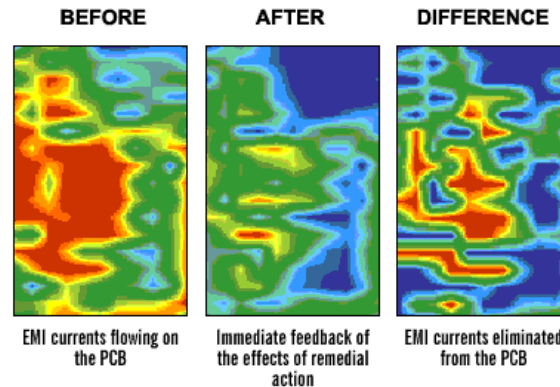


... .. Spectral Scanning



Spatial Scanning ... ..

and **Improved Design Performance**



Cost: **Paid for** by the **Milwaukee IEEE EMC Chapter**.  
A Lite Dinner will be served. We request you register with ...

**Teresa White at 262-375-4400 x132**

Date: **October 14<sup>th</sup>, 2004** ... **Thursday Evening**  
**6:00pm Registration/Dinner** with **Presentation from 6:30pm to 8:00pm**

Location: **Midway Hotel**  
**1005 South Moorland Road**  
( I-94 and Moorland, south of Brookfield Square )  
**Brookfield, Wisconsin 53005**  
Main Phone Number: **262-786-9540**

For additional Information, please contact ... **Jim Blaha at ... 262-375-4400 x104**

Seating is limited, please call now to register.



EMC Chapter Chairperson