



Milwaukee Section Chapter Meetings October 14, 2004

You are invited to attend the next IEEE Milwaukee Section – Chapter Meetings

IEEE Chapter meetings are from 6:00 PM to 7:00 PM:

Computer Society
Medicine and Biology Society
Power Society
Magnetics Society
EMC Society

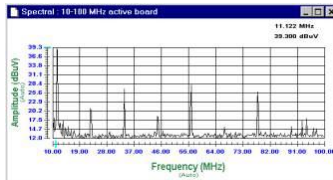
All meetings are open to all IEEE Members and Non-members.

Dinner Presentation to follow at 7:00PM

Our scheduled speaker is Mr. Doug McKinnon of EMSCAN, LLC

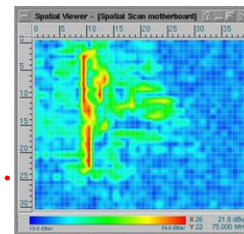
EMSCAN is the world's leader in electromagnetic scanning of PCBs
to assist design engineers in achieving
EMC compatibility and optimal functionality.

Join us to learn more about the Benefits of ...



... .. Spectral Scanning

Spatial Scanning



and **Improved Design Performance**

Cost: **Paid for** by the **Milwaukee IEEE EMC Chapter** and the **Milwaukee Section**.
A Lite Dinner will be served. We request you register with ...

Teresa White at 262-375-4400 x132

Date: **October 14th, 2004** ... **Thursday Evening**
6:00pm Registration/Dinner with **Presentation from 6:30pm to 8:00pm**

Location: **Midway Hotel**
1005 South Moorland Road
(I-94 and Moorland, south of Brookfield Square)
Brookfield, Wisconsin 53005
Main Phone Number: 262-786-9540

For additional Information, please contact ... **Jim Blaha at ... 262-375-4400 x104**

Seating is limited, please call now to register.

