

**Proposal for
IEEE Region 10 Annual Meet 2010
in Taipei, Taiwan**

**IEEE R10 Tainan/Taipei Section
Chair Jhing-Fa Wang /Chin-Teng Lin
2009/2/28**

Taiwan

An Ideal Conference Destination

- Area** : 36,000 square kilometers
- Climate** : Annual average temperature 22°C
- Population** : 23 million
- Capital** : Taipei City
- Culture** : Chinese/Aboriginal/Colonial Cultures
- Language** : Mandarin/Taiwanese/Hakka/Indigenous Languages
- Religion** : Buddhism/Taoism/Christianity/Islam
- Literature & Art** : Glove Puppetry/Oil paper umbrellas/Dough Figures/Blowing Sugar
Figurines/Chinese Knots/Scented Sachets/Whipping Tops /Kites/Diabolos/Calligraphy
- VISA** : VISA on Arrival & Waiver for more than 37 nations



Taiwan, Formosa – Beautiful Island





Alishan, Chiayi County

Some Unique Features of Taiwan

- Taipei 101
- Jade Mountain
- Hsinchu Science-based Industrial Park
- Windows on Electronic World
- Leading Semiconductor Industry in the World
- Leading IT Industry in the World



Taipei 101: World Famous



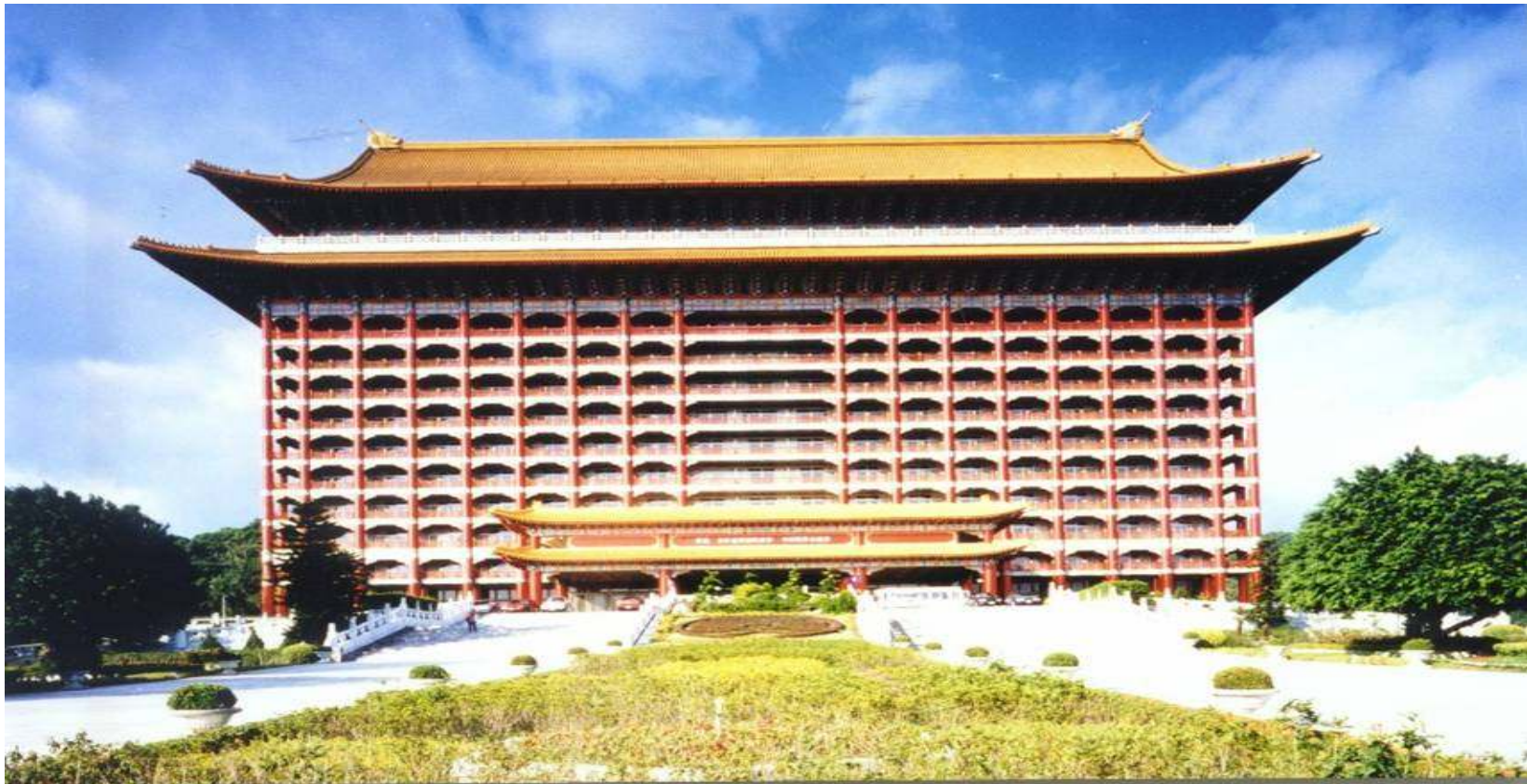
(c) Emporis Corporation

Accommodations & Venue

Grand Hotel (the most unique 5-star
conferencing hotel in Taiwan)



WELCOME



The Grand Hotel

General Information

- **Accommodation Room : 483 RMS**

Budget/Superior/Deluxe/Prestige

Junior Suite /Executive Suite

Prestige Junior Suite

/Prestige Grand Suite

Presidential Suite

- **Restaurant : 7 Restaurants**

Golden Dragon Restaurant/Grand Garden Western Dining Room/Yuan Yuan/The Lounge/Chi Lin Cafe/Yuan Shan Club, Chinese Dining Room/Yuan Shan Club, Western Dining Room

- **Function Room : 25RMS**

Minimum: 10 pax Maximum: 1000 pax

Restaurant

Golden Dragon Restaurant/Grand Garden Western Dining room/Yuan
Yuan/Chi Lin Cafe



Restaurant

The Lounge/Y.S. Club-Western Dining Room
/Y.S. Club-Chinese Dining Room



Amenities

10F: Fitness Center/Sauna

Yuan Shan Club:

Tennis Court/Bolin Alley

Snooker/Table Tennis/Swimming Pool



Function Rooms

The Grand Ballroom/International Reception Hall/Small
Function Rooms



Function Rooms

10F Auditorium/12F Sky Lounge
B1 Fu-chuan Room/Der-hou Room



Historical Landmark

Lobby gallery



Historical Landmark

Golden Dragon



ROOM RATES

| ROOM TYPE | 2009 RACK RATE | 2010 SPECIAL RATE |
|---|--------------------|-----------------------------|
| Budget Room (No view) | US\$150 +10%SVC | US\$85.Net |
| Standard Room (Golden Dragon Pavilion, Chi-Lin Pavilion) | US\$200 +10%SVC | US\$130.Net |
| Deluxe Room (Main Building 2-6F) | US\$250 +10%SVC | US\$145.Net |

MEETING ARRANGEMENT

| DATE | TIME | VENUE | FUNCTION | ATTENDANCE | MEETING PACKAGE |
|------------------------------|------------------------------------|--|-------------|---------------------------|--|
| End Feb or Early March | 08:00-22:00 | 1F, Meeting Room #108 | Secretariat | ----- | Free of charge (NT\$32,000/per day) |
| End Feb or Early March | 1 st Day 08:00-17:00 | 1F, The International Reception Hall / "U" shape seating | Seminar | Around 80 -100 persons | US\$45 |
| End Feb or Early March | 2 nd Day 08:00-12:00 | 1F, The International Reception Hall / "U" shape seating | Seminar | Around 80 -100 persons | US\$35 |
| | | | | | |
| | | | | | |
| | | | | | |

BANQUET in Taipei 101

| DATE | TIME | VENUE | FUNCTION | ATTENDANCE | SPECIAL RATE |
|----------------------------------|------------------------------------|-----------------------------------|----------------------|--------------------------|-----------------------------------|
| End Feb. or Early March | 1 st Day 12:00-13:00 | B1, Fu-Chuan Room | Cantonese Dim-Sum | Around 80-100 persons | Included with meeting package |
| End Feb. or Early March | 1 st Day 18:00-21:00 | Taipei 101 | | Around 80-100 persons | US\$50-60 +10% SVC/per persons |
| End Feb. or Early March | 2 nd Day 12:00-13:00 | LF, Grand Garden Restaurant | Western buffet | Around 80-100 persons | Included with meeting package |

Taipei City Half-Day Tour



Modern Art Performance



Taipei's Night Markets



C.K.S. Memorial Hall



National Palace Museum



Taiwanese Food



Grand Hotel



Yangmingshan National Park

Post meeting one-Day Tour

Hsinchu Science Park

- Established in 1980
- Integrated Circuits
- Computer & Peripherals
- Telecommunications
- Optoelectronics
- Precision Machinery
- 2008 Total Revenue
~30 billion USA Dollars

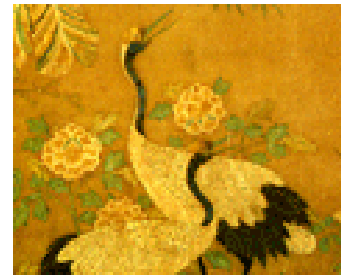
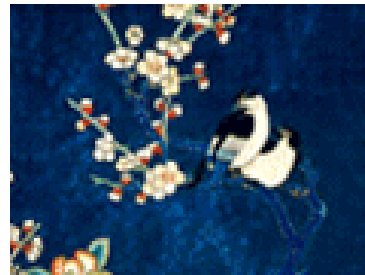
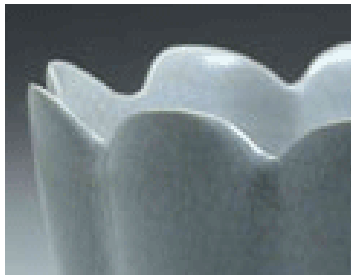


新竹科學工業園區
Hsinchu Science Park
Taiwan



National Palace Museum

- Protecting and preserving the 7000-year cultural legacy of China
- From an Imperial Art Collection to a National Museum
- The Exhibitions of the Museum: Shows of Originality and Beauty
- 15 minutes from the conference venue



The Grand Hotel



Looking forward to your visit
2010!

Budget Planning

- Total cost is about US\$600/person
- Cost for 3 nights: $130*3=390$
- Meeting cost (including 2 lunches):
 - $35+45 = 80$
- Banquet & Transportation: 65
- Half day tour 40
- *Post meeting one-Day Tour to Hsinchu Science Park : 0*
- ** able to get some support from industry
- ** R10 annual meet first time to Taipei,
Please support !!