

# MGA and IEEE Activities

**IEEE Region Meetings  
2008**



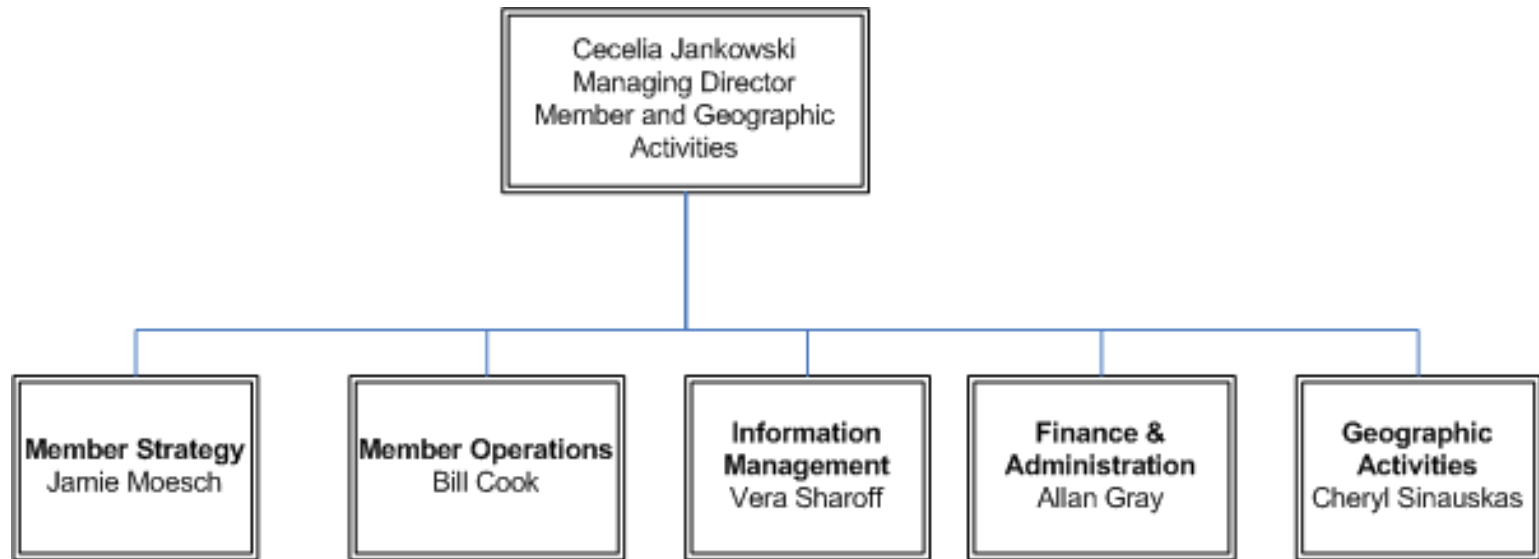
# 2008 Changes in MGA Staff

- As part of our transition to Member and Geographic Activities
  - IEEE Staff (formerly RA Dept.) reorganized to MGA
  - New staff has been added to enhance our capabilities
- As of 1 Aug 2008 the Member Services Dept. is now reporting to MGA
  - This group is now referred to as Member Operations
- MGA Staff has been organized into five areas of support:
  - Finance & Administration, Geographic Activities, Information Management, Member Strategy and Member Operations

# 2008 Changes to MGA Staff

- Staff joining the IEEE Member and Geographic Activities Department this year:
  - Kuangyunn Chiu  
Member Data & Research Manager
  - Allan Gray  
Director, Finance & Administration
  - Nick Lehotzky  
Member Benefits Marketing Manager Online Products
  - Elyn Perez  
Membership Sales Operations Manager
  - Cheryl Sinauskas  
Director, Geographic Activities
- Departed IEEE Member and Geographic Activities during this year:
  - Janet Caswell  
Administrator

# IEEE MGA Staff Organization



# MGA ACTIVITIES

# SAMIEEE

- What is it?
  - SAMIEEE is a web based ad-hoc query tool that provides IEEE volunteers with access to IEEE membership data
- Who can access it?
  - Automatic access is granted to
    - Region Directors, Society Officers, Section Officers, Chapter Chairs and Student Branch Chairs & Counselors
  - Designated
    - Region Directors, Society Officers, Section Officers, Chapter Chairs and Student Branch Chairs & Counselors.
- How to access it
  - [www.ieee.org/samieeee](http://www.ieee.org/samieeee)

# SAMIEEE

- What is Included
  - Data included in your view is data for your organizational unit only
    - IEEE members: Active, Arrears or Inactive (3yrs)
    - Society Affiliates: Active, Arrears or Inactive (3yrs)
    - IEEE Society memberships: Active or Inactive (up to three years)
- User documentation has been developed and On Demand training is available at:
  - <http://www.ieee.org/organizations/vols/samiee/OnDemand/index.html>

# Membership Development Kits

- 2009 IEEE Membership Development Kits were mailed to IEEE Region, Section and Society Membership Development Officers in August
- 2009 MD Kit has been upgraded and will include:
  - 2009 membership brochure
  - Additional information about benefits of membership
  - Updated Membership Development Manual
  - Program manual for new Student Transition & Elevation Partnership (STEP)
  - Information on IEEE's 125<sup>th</sup> Anniversary
- Officers can replenish their 2009 supplies by ordering online at: [www.ieee.org/mdsupplies](http://www.ieee.org/mdsupplies)

# vTools

- **Additional tools to be included within vTools**
  - **vTools.Student Branch Reporting** - tool for collecting and searching reports submitted by student branch volunteers such as annual plan and report of activities. Pilot this Fall.
  - **vTools.Demographics** - tool to show membership distribution on a map to assist officers decide where to hold meetings, form new chapters, have conferences, etc. Tool in development phase.
- **More vTools projects** - we are planning to introduce more tools in the next few years. Among the tools we will have: Awards, Section Dashboard, Communicate, Prospective Members, Membership Development, Off-line join, Agendas, and more.
- **Sessions on vTools** - Saturday @ 2:30 & Sunday @ 10:45
- **vTools Exhibit Table** – Please Stop by for More Details

# IEEE Merchandise Line

- In response to the growing demand for IEEE branded promotional items, the IEEE Merchandise Collection has been developed.
- Merchandise program is now available, with an official launch scheduled for 1 October
  - E-store Service ([www.ieee.org/merchandise](http://www.ieee.org/merchandise))
  - Special Orders (Ad-hoc needs, Specialty items, Super bulk-order)



# IEEE Step

- IEEE STEP is the Student Transition & Elevation Partnership program
- It is a localized program for facilitating the transition from student to young professional, by introducing the opportunities and benefits of IEEE membership during the onset of a career
- The program is being launched at Sections Congress during the GOLD Summit
- Stop by the GOLD/Student Exhibit table for more details

# MEMBER BENEFITS



**myIEEE™**



Stop by the IEEE Online Member Benefits  
Exhibit Table for More Details

- IEEE.tv is an internet based television network made possible by members of the IEEE. ([www.ieee.org/ieee.tv](http://www.ieee.org/ieee.tv))
- IEEE.tv produces and delivers special interest programming about technology and engineering for the benefit of IEEE members and the general public.
- As of July 2008
  - 7 Series types (Careers & Technology, Technical Tours, Meet the Authors, Conference Highlights, IEEE Products, IEEE.tv Specials, History)
  - 53 Programs (3 new releases in July)
- Downloading is available to IEEE members only.
  - To learn more about sponsoring an IEEE program contact Noël Bryson at [n.bryson@ieee.org](mailto:n.bryson@ieee.org).

# Utilize IEEE.tv by . . .

- Watching content on your PC at work or home
- Downloading programs to use during meetings.  
Have content playing while members are gathering or during breakout sessions.
- Incorporating into your training, lecture or presentation.
- Adding video to your Region or Section web site.
- To learn more about IEEE.tv contact Brian Pratz at [b.pratz@ieee.org](mailto:b.pratz@ieee.org).

# Sample IEEE.tv Program Guide

IEEE.tv has over 53 programs in its lineup segmented into 7 unique Series. The list below is a snap shot of available programs. Log-on to [www.ieee.org/IEEEtv](http://www.ieee.org/IEEEtv) for a complete and current listing.

| Program   | Series                | Status        |
|---|-----------------------|---------------|
| <a href="#">Art of the Start: Entrepreneurship</a>                      | Careers & Technology  | Member Access |
| <a href="#">Coal Gasification at Polk Power Station</a>                 | Technical Tours       | Public        |
| <a href="#">Diab and Frazier: Ethernet in the First Mile</a>            | Meet the Authors      | Member Access |
| <a href="#">Education for Analog ICs</a>                                | Careers & Technology  | Member Access |
| <a href="#">Electric Ship Technologies Symposium</a>                    | Conference Highlights | Member Access |
| <a href="#">IEEE Membership . . . Why We Joined</a>                     | IEEE Products         | Public        |
| <a href="#">IEEE Risk Management and Professional Liability Program</a> | IEEE Products         | Member Access |
| <a href="#">Nerd Girls</a>  | IEEE.tv Specials      | Public        |
| <a href="#">Oral History: Earl Bakken</a>                               | History               | Public        |
| <a href="#">Oral History: Jerry Minter</a>                              | History               | Public        |
| <a href="#">Profiles in Volunteering: Part 1</a>                        | IEEE.tv Specials      | Member Access |
| <a href="#">Radio Frequency Identification</a>                          | Conference Highlights | Public        |
| <a href="#">Richard J. Thompson Jr.: Crystal Clear</a>                  | Meet the Authors      | Member Access |
| <a href="#">The Story of Hoover Dam</a>                                 | Technical Tours       | Public        |
| <a href="#">VuSpec Series</a>   | IEEE Products         | Public        |



**IEEE In China**  
*IEEE.tv Specials*  
(Member Access)



**Richard Schreier Ph.D:**  
**Understanding Delta Sigma Data Converters**  
*Meet the Authors*  
(Member Access)

# IEEE memberNet

- memberNet is an online networking tool that allows members to connect with technical and engineering experts worldwide ([www.ieee.org/memberNet](http://www.ieee.org/memberNet))
- Opt-in your preferences to begin building your professional network
  - Preferences include: Bio, Photograph, Education, Employer, Contact info (address, phone, email), and more
- Search and network with members based on technical interests, society memberships, country, university, employer and more.
- Access via myIEEE



# myIEEE

- Personalized web portal providing members with convenient access to IEEE member benefits.
- Find out about upcoming conferences, IEEE Societies and affinity groups, IEEE Standards Association activities, IEEE publications, and other benefit offerings—all selected to fit your profile and career.
- Connect with your local Section, Chapter or Student Branch

