

# IEEE Region 2 - EAB

AB Shafaye

Phone: (717) 948-6349

Fax: (717) 948-6352

Email: [mes121@psu.edu](mailto:mes121@psu.edu)

# Tentative job description for Regional Education Chair

1. Maintain information about Educational Activities through the IEEE Educational Activities Department (<http://www.ieee.org/education>) publicizing educational opportunities available from the Institute to Region organizational units.
2. Promote educational activities at the member level and communicate to the Educational Activities Board (EAB) the educational concerns of the membership.
3. Promote existing EAB awards (<http://www.ieee.org/eab-awards>)
4. Serve as a voting member of IEEE EAB Section Outreach Committee.

# TryEngineering.org

*Available to Members in R 1-10*



- Website created by IEEE, IBM, and New York Hall of Science. Combines information on engineering careers with interactive activities to raise public awareness of the engineering profession
- Primary audience: students, parents, teachers, school counselors, and the general public
- Visitors to the portal can:
  - Prepare for an engineering career
  - Find student opportunities such as summer camps, internships, etc
  - Search for universities with accredited engineering programs
  - Ask experts engineering-related questions, and more...

*Visit: [www.TryEngineering.org](http://www.TryEngineering.org)*

# Teacher-In-Service Program

*Available to Members in R 1-10*

- Features IEEE Section volunteers developing and presenting technologically-oriented subject matter to local pre-university educators in an in-service or professional development setting
- TISP allows IEEE volunteers to share their technical expertise and to demonstrate the application of engineering concepts to support the teaching and learning of science, mathematics and technology disciplines.

To learn more visit

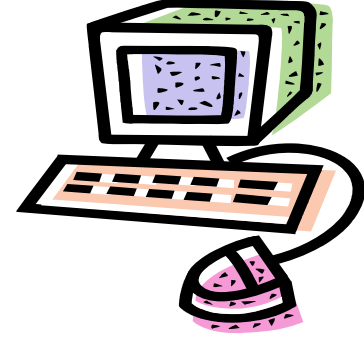


[www.ieee.org/web/education/preuniversity/tispt/tispworkshops.html](http://www.ieee.org/web/education/preuniversity/tispt/tispworkshops.html)

# IEEE Expert Now

## For Individual Member Use

*Available to Members in R 1- 10*



- IEEE Expert Now program makes available 1-hr educational courses and tutorials delivered to your computer
- Courses are developed by Subject Matter Experts in a wide range of topics
- There are 70+ courses in the library. Additional modules added frequently

*Visit:* [www.ieee.org/expertnowieee](http://www.ieee.org/expertnowieee)



# IEEE Education Partners Program

*Available in R1-10*

- IEEE Education Partners provide access to more than 6,000 online courses, certificate programs and graduate degree programs to meet the diverse needs of members
- Program offers IEEE members a 10% discount on courses through partnerships with academia and industry
  - Courses are available in over 6 languages
  - On-site courses are available in 22 countries
  - Over 22 course topics are available



*Visit:* [www.ieee.org/partners](http://www.ieee.org/partners)



# Continuing Education Units

*Available to Members in R1-6*

- A Continuing Education Unit (CEU) is a nationally recognized method of quantifying the time spent learning during professional development and training activities.
- IEEE is an Authorized CEU Provider through the International Association of Continuing Education and Training (ANSI/IACET), and has adopted ANSI/IACET guidelines and criteria for all its continuing professional development programs.

*Visit: [www.ieee.org/ceus](http://www.ieee.org/ceus)*



**CEU**

One CEU equals ten contact hours of instruction in a continuing education activity. One CEU translates to Ten PDHs.

**PDH** (Professional Development Hour)

One contact hour of instruction or presentation



# Educational Activities Board Awards Program

*Available to Members in R1-10*

EAB Awards honor individuals and companies for major contributions to engineering and technical education.

## Awards Timeline

- The EAB Awards website is operational December 1<sup>st</sup>
- The call for EAB Awards nominations go out in January
- Nominations close April 30
- Award winners are decided at the June IEEE Board Series

*Visit:* [www.ieee.org/eab-awards](http://www.ieee.org/eab-awards)



# EAB Awards Program Continued

Awards are given for:

- Meritorious Achievement in Accreditation
- Continuing Education
- Informal Education
- Educational Innovation
- Pre-university Education
- Service to the IEEE EAB
- Employee Professional Development
- And related achievements that advance the practice of engineering and of engineering education



# IEEE Standards Education

*Available to Members in R1-10*

- Offering online learning modules and resources to enhance the understanding of technical standards
- Providing an IEEE Standards Education Web Portal that offers
  - Standards-related Tutorials and Case Studies
  - Student Application Papers based on Senior Design Projects
  - Expert Now courses for practicing professionals and students
  - And More...

# University Programs

## *What we know...*

- Higher Education is a primary source of basic and applied knowledge that advances the engineering profession.
- Higher educational institutions train and produce the next generation of engineering leaders and practitioners.

## *What we are doing...*

- The IEEE is making a significant and sustained investment in higher education outreach and support.
- IEEE is currently expanding its investment in faculty and curriculum development activities to reach engineering educators worldwide

# Current University Programs

*Available to Members R1-10*

## 2008-2009 Projects

- Real World Engineering Project
  - Provides seed grant funds to faculty to develop applied learning materials for first-year courses. Information about the project and downloads of materials are online.

*Visit:* [www.realworldengineering.org](http://www.realworldengineering.org)

- Emerging Technologies Summer Series
  - Provides an intensive week-long program for selected graduate students, post-docs and young faculty on instruction and research opportunities in “emerging” fields.
  - June 2009 program will focus on biometrics.
- Academic Member Needs & Expectations Survey
  - Conduct the survey in 4<sup>th</sup> Q 2008. Results will identify additional program initiatives that may lead to conferences, award and recognition programs, curriculum materials and communication activities.

# Accreditation.org

*Available to Members in R 1- 10*

- On-line resource for those who are interested in finding out more information on accreditation of engineering, engineering technology and computing programs worldwide.
- Primary audience: Working professionals in engineering, technology, and computing; students, teachers and administrators of education programs; decision makers in governmental, industrial and private organizations
- Visitors to the portal can:
  - Identify recognized accrediting agencies throughout the world
  - Access current summaries of accreditation agreements and agencies
  - Find accredited programs in their area



*Visit: [www.Accreditation.org](http://www.Accreditation.org)*

# Immediate Action Plans

- Develop a web site similar to what Region 3 has accomplished; customized to the needs of our region
- Assist EAB in developing clear job responsibilities for Regional EAB, Pre-University, and Continuing Education chairs

Doug Tipton

Continuing Ed

- Within Delaware Bay section; using University of Delaware EE seminar series to promote “expert lecturer” type presentations. Lectures during lunch on campus. Good response so far in the industrial community. Comments --material “over their heads”, but want to continue.
- This year, tried a “Theme for the Year” and build on the program throughout the year. This year’s theme is “Energy Options”. Good results.

# IEEE Distinguished Lecturer Program

- The current IEEE national program seems to be busted.
- Discussion in Del Bay Section about a local area DL program e.g for Del Bay, form an East Area DL program. However, not much enthusiasm with our local Del Bay speakers for going outside our area.